

FOUR FAMILIES

RE-ESTABLISHED 2014



RESENE ORIGIN & RESENE ORIGIN VERTICAL

blockout fabric



Resene

the paint the professionals use

AUSTRALIAN DESIGNED

100%

the 1990s, the number of people in the UK who are aged 65 and over has increased from 10.5 million to 13.5 million (19.5% of the population).

There is a growing awareness of the need to address the needs of older people, and the Government has set out a strategy for the 21st century in the White Paper on *Ageing Better: Our Future* (Department of Health, 1999). This paper sets out the Government's strategy for the 21st century in the White Paper on *Ageing Better: Our Future* (Department of Health, 1999).

The White Paper sets out a strategy for the 21st century in the White Paper on *Ageing Better: Our Future* (Department of Health, 1999).

The White Paper sets out a strategy for the 21st century in the White Paper on *Ageing Better: Our Future* (Department of Health, 1999).

The White Paper sets out a strategy for the 21st century in the White Paper on *Ageing Better: Our Future* (Department of Health, 1999).

The White Paper sets out a strategy for the 21st century in the White Paper on *Ageing Better: Our Future* (Department of Health, 1999).

The White Paper sets out a strategy for the 21st century in the White Paper on *Ageing Better: Our Future* (Department of Health, 1999).

The White Paper sets out a strategy for the 21st century in the White Paper on *Ageing Better: Our Future* (Department of Health, 1999).

The White Paper sets out a strategy for the 21st century in the White Paper on *Ageing Better: Our Future* (Department of Health, 1999).

The White Paper sets out a strategy for the 21st century in the White Paper on *Ageing Better: Our Future* (Department of Health, 1999).

The White Paper sets out a strategy for the 21st century in the White Paper on *Ageing Better: Our Future* (Department of Health, 1999).

The White Paper sets out a strategy for the 21st century in the White Paper on *Ageing Better: Our Future* (Department of Health, 1999).

The White Paper sets out a strategy for the 21st century in the White Paper on *Ageing Better: Our Future* (Department of Health, 1999).

The White Paper sets out a strategy for the 21st century in the White Paper on *Ageing Better: Our Future* (Department of Health, 1999).

The White Paper sets out a strategy for the 21st century in the White Paper on *Ageing Better: Our Future* (Department of Health, 1999).

The White Paper sets out a strategy for the 21st century in the White Paper on *Ageing Better: Our Future* (Department of Health, 1999).

The White Paper sets out a strategy for the 21st century in the White Paper on *Ageing Better: Our Future* (Department of Health, 1999).

The White Paper sets out a strategy for the 21st century in the White Paper on *Ageing Better: Our Future* (Department of Health, 1999).

The White Paper sets out a strategy for the 21st century in the White Paper on *Ageing Better: Our Future* (Department of Health, 1999).

The White Paper sets out a strategy for the 21st century in the White Paper on *Ageing Better: Our Future* (Department of Health, 1999).

The White Paper sets out a strategy for the 21st century in the White Paper on *Ageing Better: Our Future* (Department of Health, 1999).

The White Paper sets out a strategy for the 21st century in the White Paper on *Ageing Better: Our Future* (Department of Health, 1999).

The White Paper sets out a strategy for the 21st century in the White Paper on *Ageing Better: Our Future* (Department of Health, 1999).

The White Paper sets out a strategy for the 21st century in the White Paper on *Ageing Better: Our Future* (Department of Health, 1999).

The White Paper sets out a strategy for the 21st century in the White Paper on *Ageing Better: Our Future* (Department of Health, 1999).

The White Paper sets out a strategy for the 21st century in the White Paper on *Ageing Better: Our Future* (Department of Health, 1999).



RESENE ORIGIN & RESENE ORIGIN VERTICAL

THE STORY

Our head designer once told us, “Don’t focus too much on the texture, it’s all about the colour. The colour creates the ambience, the texture is the finishing touch.” Our next question was: Who does the best colours? Answer: Resene! A collaboration started and Resene Origin is just the beginning

HOW IT'S MADE

COMPOSITION:	100% polyester
WIDTH:	300cm - Also available in Vertical 127mm
ROLL LENGTH:	20-25m (100m for vertical)
WEIGHT:	365gsm +/- 10%
SPECIAL TREATMENT:	blockout acrylic coloured coating

Suitable for roller blinds, roman blinds, panel glides & vertical blinds

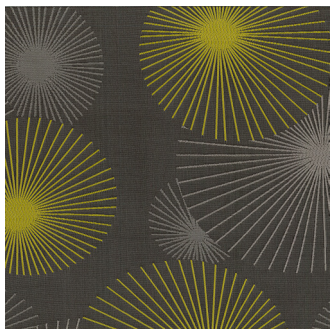
HOW IT WORKS

Resene paints are designed to co-ordinate throughout the whole house. You can now apply the same principle with your blind fabrics. This collection of best-selling neutral colours will co-ordinate beautifully with your Resene painted walls and with each other. The fabric colour names are matched to Resene paint colours of the same name.



PAIRINGS

The Resene Origin design & colours have been chosen by our design team to complement these Maurice Kain curtain fabrics:



Maurice Kain
ASTRAL CITRINE



Maurice Kain
NATIONAL TWIST



Maurice Kain
SONIC CITRINE



Maurice Kain
WOODLANDS TWIST



TAKING CARE

Cleaning your blind fabric is essential, not only to remove surface dust and stains, but it will also increase the longevity of your blinds. Use a feather duster, or a vacuum set on low with an appropriate attachment. Always exercise caution when spot cleaning. Use a clean, lint-free cloth or sponge and dip it in warm water. Dry gently with a clean towel. Always make sure to test any cleaning product on a small, discreet section of the fabric. Chemicals will permanently damage your fabric.

FOUR FAMILIES

RE-ESTABLISHED 2014



ALL THE FOUR FAMILIES FABRICS HAVE A LIGHT FASTNESS SCORE OF AT LEAST 5 ON THE BLUE SCALE (ISO 105-B02: 1994), WHICH ENSURES THAT THE COLOURS WILL STAY VIBRANT FOR MANY YEARS TO COME. COLOURS MAY VARY SLIGHTLY FROM ONE PRODUCTION BATCH TO ANOTHER. VARIATIONS ARE WITHIN INDUSTRY STANDARD (DELTA E READING 1_s). PLEASE ALWAYS CHECK THE COLOUR BEFORE CUTTING.

RESENE COLOURS ARE USED BY PERMISSION OF RESENE PAINTS LTD. COLOURS MAY APPEAR TO VARY WITH DIFFERENT GLOSS LEVELS, LIGHTING AND SURFACE TEXTURE. WE RECOMMEND CHOOSING A COMPLIMENTARY BUT DIFFERENT WALL COLOUR TO YOUR BLINDS COLOUR FOR VISUAL INTEREST.