

# FOUR FAMILIES

RE-ESTABLISHED 2014



---

## ZARU

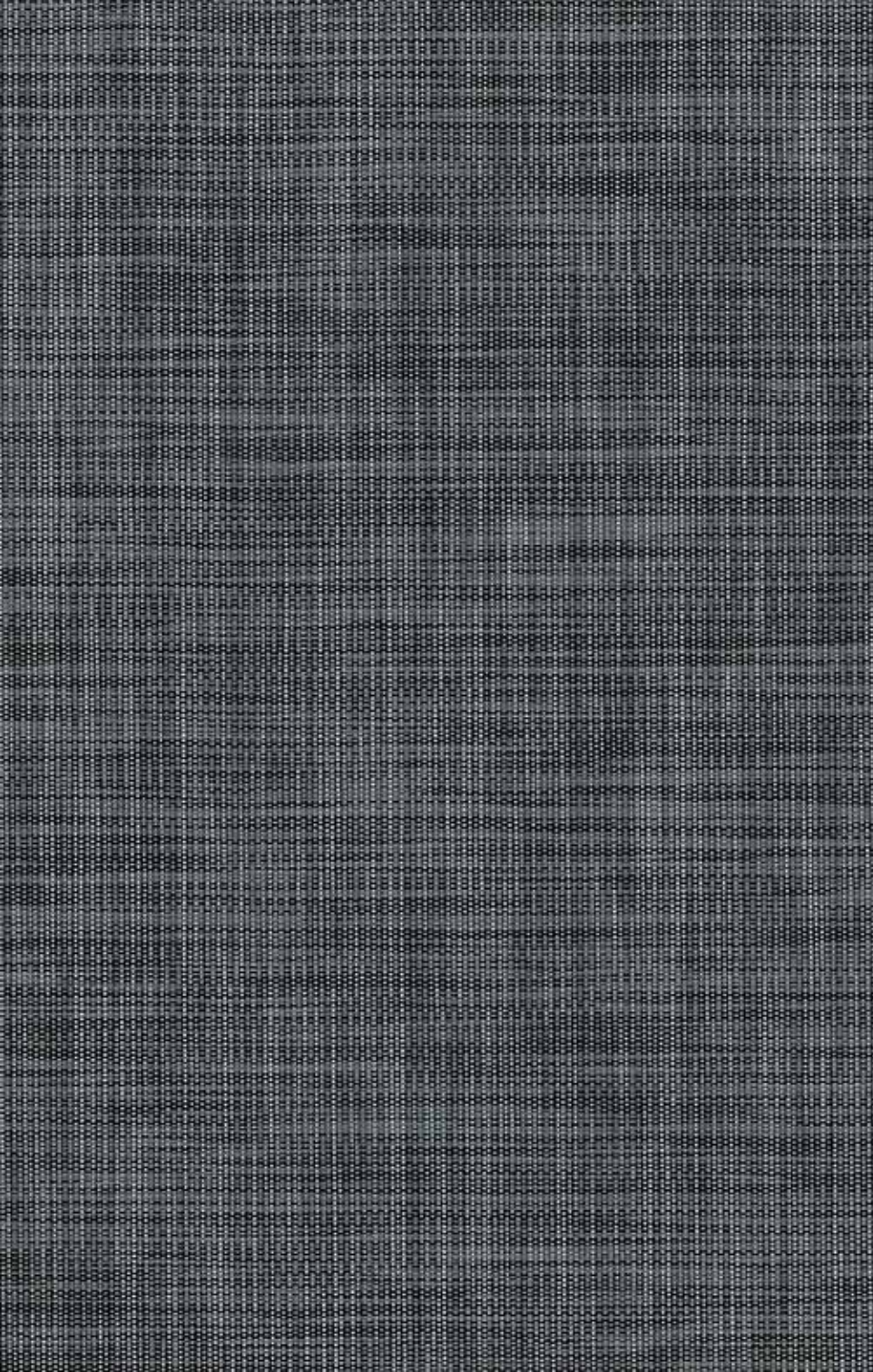
*a screen fabric*

---

FABRIC WIDTH  
*300 cm*

AUSTRALIAN DESIGNED

*100%*





# ZARU

## THE STORY

*This one we didn't design ourselves - we have our weaving partner to thank for it. The concept is simple: the minimalist look of screen fabric is not for everyone, but the heat & glare protection it brings is outstanding. Made by putting 2 colours into the coating of the yarn to create a cross-dyed effect, Zaru is a brilliant decorative fabric.*

## HOW IT'S MADE

<b>COMPOSITION:</b>	<i>30% Polyester / 70% PVC</i>
<b>WIDTH:</b>	<i>300cm</i>
<b>ROLL LENGTH:</b>	<i>22 – 30m rolls</i>
<b>WEIGHT:</b>	<i>410gsm +/- 10% (ISO 2286-2)</i>
<b>THICKNESS:</b>	<i>0.63mm +/- 5% (ISO 2286-3)</i>
<b>OPENNESS FACTOR:</b>	<i>3%</i>
<b>PATTERN:</b>	<i>1x2 Basket weave</i>
<b>FIRE CLASSIFICATION:</b>	<i>FR (NFPA 701-2010)</i>
<b>BREAKING STRENGTH:</b>	<i>Warp 150 daN/5cm, Weft 159 daN/5cm (ISO 1421)</i>

**TEAR STRENGTH:** *Warp 6.6 daN, Weft 5.8 daN (ISO4674)*

**EXTREME LIGHT STABILITY:** *2000h ASTM G53-96*

**COLOUR FASTNESS TO LIGHT:** *8 (ISO 105:B02)*

**SPECIAL TREATMENT:** *VOC free, Mould resistant (ISO 846)*

*Suitable for roller blinds, roman blinds & panel glides.*

KATO'S WEAVING ENVIRONMENTAL MANAGEMENT SYSTEM  
COMPLIES WITH ISO 14001  
OEKOTEX & GREENGUARD CERTIFIED FABRIC

## PAIRINGS

*The Zaru design and colours have been chosen by our design team to complement these Maurice Kain curtain fabrics:*



*Maurice Kain*  
**BROOKLYN MOCCACHINO**



*Maurice Kain*  
**AFFINITY TEMPO**

 a division of  
**basford**brands

[www.fourfamilies.com.au](http://www.fourfamilies.com.au)

# TAKING CARE

*Cleaning your blind fabric is essential, not only to remove surface dust and stains, but it will also increase the longevity of your blinds. Use a feather duster, or a vacuum set on low with an appropriate attachment. Always exercise caution when spot cleaning. Use a clean, lint-free cloth or sponge and dip it in warm water. Dry gently with a clean towel. Always make sure to test any cleaning product on a small, discreet section of the fabric. Chemicals will permanently damage your fabric.*

## FOUR FAMILIES

RE-ESTABLISHED 2014



ALL THE FOUR FAMILIES FABRICS HAVE A LIGHT FASTNESS SCORE OF AT LEAST 6 ON THE BLUE SCALE (ISO 105-B02: 1994), WHICH ENSURES THAT THE COLOURS WILL STAY VIBRANT FOR MANY YEARS TO COME. COLOURS MAY VARY SLIGHTLY FROM ONE PRODUCTION BATCH TO ANOTHER. VARIATIONS ARE WITHIN INDUSTRY STANDARD (DELTA E READING 1 $\leq$ ). PLEASE ALWAYS CHECK THE COLOUR BEFORE CUTTING.