



POWDER & INDUSTRIAL COATINGS

PRODUCT SOLUTIONS

# DURALLOY®

POWDERCOAT RANGE



Worth doing, worth Dulux.®

# Worth doing. Worth Dulux.<sup>®</sup>

Duralloy are a range of subtle, neutral solid colours including the Colorbond<sup>®</sup> steel standard colour range, delivered with warranty grade advanced durable polyester thermosetting powder.



✓ Durable finish

✓ Good colour retention

## Suitable Substrates

Duralloy is ideal for warranty grade applications over:

- Architectural aluminium including perforated and expanded aluminium.
- Steel (mild), bright/semi bright steel, black steel and blue steel

Duralloy can also be used on the following metals but these are not warranted:

- Galvanised Steel, Stainless steel, zincalume, non ferrous metals

## Warranted Benefits

The Dulux Duralloy range are supported by Dulux Alumi Shield<sup>™</sup> and Dulux Steel Shield<sup>™</sup> warranties when applied by a Dulux Accredited Powder Coater to the warranty specification on recommended project types and conditions.

Alumi Shield <sup>™</sup> Warranty	Steel Shield <sup>™</sup> Warranty
<p>The Alumi Shield<sup>™</sup> warranty is made up of two key components, a colour warranty (for fade and chalking) and a durability warranty (film integrity)</p>	<p>The Steel Shield<sup>™</sup> warranty is made up of two key components, a colour warranty (for fade and chalking) and a corrosion warranty</p>

### Terms and conditions apply

- The Alumi Shield<sup>™</sup> and Steel Shield<sup>™</sup> colour warranties are your assurance that Duralloy will not  
**Fade** – Fade testing will not give a delta E (Hunter) laboratory reading greater than five units from the original colour.  
**Chalking** – Terms of chalking when measured in accordance with the procedures specified in AS1580 METHOD 481.1.
- The Alumi Shield<sup>™</sup> durability warranty is your film integrity assurance that Duralloy will not peel, crack or flake for the warranty period from the date the product is applied to the metal.
- The Steel Shield<sup>™</sup> corrosion warranty is your assurance that the coating system will not corrode more than 5% in accordance with the degree of corrosion as a percentage contained in AS/NZS:2312.
- Warranties are only valid when applied by a Dulux Accredited Powder Coater to the warranty specification on recommended project types and conditions

For more information visit [duluxpowders.com.au/warranties](http://duluxpowders.com.au/warranties)

## Meets International Standards

With over 50 years of experience, the AAMA (American Architectural Manufacturer's Association) is regarded as the standards leader for finishes on architectural aluminium. Dulux Duralloy is formulated to meet: AAMA 2603 as well as Australian standard AS 3715.






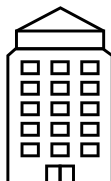

For more information visit [aamanet.org](http://aamanet.org)

Colorbond<sup>®</sup> and the Colorbond colour names are registered trademarks of Bluescope Steel Limited

# Project Suitability

## Project Types

Duralloy is ideal for interior projects on steel and aluminium that are within exterior class 1 & 10 residential buildings of the building code and non-habitable projects.

							
	<b>NON-HABITABLE</b>	<b>RESIDENTIAL &lt;4 LEVELS</b>	<b>RESIDENTIAL &gt;3 LEVELS</b>	<b>COMMERCIAL &lt;4 LEVELS</b>	<b>COMMERCIAL &gt;3 LEVELS</b>	<b>PRESTIGIOUS COMMERCIAL</b>	<b>MONUMENTAL</b>
<b>INTERIOR</b>	●	●	●	●	●	●	●
<b>EXTERIOR</b>	●	●					

- Non-Habitable projects are those that are not dwelling types. Examples can be furniture, bus shelters, signage etc.
- Residential properties are typically easy to maintain, given their height and access.
- High-rise projects are less sheltered from neighbouring buildings, raising their exposure and reducing their ease of maintenance.
- Monumental projects attract the most attention and have the highest standards required to uphold the reputation expected from landmark sites.

## Project Suitability - Aluminium

Project Type	Environment	Conditions	Duralloy
Residential (<4 Levels)	Exterior	Mild	●
Non-Habitable	Exterior	Mild	●
All projects	Interior	General Interior	●

- Alumi Shield™ warranty available

Duralloy is only suitable for coastal environments > 100m from the high tide and is NOT suitable in strongly acidic environments so PH must be >5. Please refer to Interior and exterior environments close to liquids for warranty implications where powder coatings may be in close proximity to liquids other than the sea.

Alumi Shield™ warranties on perforated and expanded aluminium are available for Duralloy in the following environments:

- Interior: General Interior conditions (E-Prime base coat not mandatory).
- Exterior: Mild (E-Prime base coat not mandatory).

For more information about specifications on perforated and expanded aluminium visit [duluxpowders.com.au](http://duluxpowders.com.au)

## Conditions

Use the following table which references AS4312 (atmospheric corrosivity zones in Australia) and AS3715 (Metal Finishing – Thermoset powder coatings for architectural applications of aluminium and aluminium alloys) to define the environmental conditions of your project.

Environment	Conditions	Corrosivity level & Zone	Mild Steel Corrosion Rate <sup>1</sup>	Example environments
Exterior Environment:	Mild	Low (C2)	1.3 - 2.5	Arid, urban, inland city
		Medium (C3)	25-50	Industrial and coastal
Interior Environments	General Interior	Very low(C1)	<1.3	Dry interiors
		Low (C2)	1.3-25	Minor condensation

1. Corrosion rate is for uncoated steel and is for reference to Steel Shield warranty environments

## Project Suitability - Steel

Use the following table to help identify where Duralloy can be applied on steel projects, the system required and the Dulux Steel Shield™ warranty level available. Refer to the conditions information to determine the environment that your project will be exposed to.

Corrosion Category			Primer System	Top Coat	
Project Type	Environment	Conditions (incl Corrosivity Level)	Zincshield	Duralloy	
				Corrosion Warranty	Colour Warranty
Residential (<4 Levels)	Exterior	Mild (Medium)	✓	5 Years	10 Years
Residential (<4 Levels)	Exterior	Mild (Low)	✓	10 Years	10 Years
Non Habitable	Exterior	Mild (Medium)	✓	5 Years	10 Years
Non Habitable	Exterior	Mild (Low)	✓	10 Years	10 Years
All Projects	Interior	General Interior (Very low to low)	✓	10 Years	10 Years

Duralloy is only suitable for coastal environments >100m from the high tide and is NOT suitable in strongly acidic environments so PH must be >5. Please refer to Interior and exterior environments close to liquids for warranty implications where powder coatings may be in close proximity to liquids other than the sea.

## Interior and exterior environments close to liquids other than the sea

For powder coated assets close to liquids other than the sea, e.g. fences near swimming pools, fountains, bathrooms or furniture etc, please refer to the guidance below to understand the warranty limitations in these environments.

	Chemically Treated	Clean Tap, Fresh or Potable Water	Salt Water	Other
Duralloy	✓	■	✓	Seek advice from Dulux Call 13 24 99

1. Please note chemically treated water includes antimicrobial treatments, e.g. in pools, anti-corrosive chemicals, and soapy water in bathrooms and showers.

✓ Where indicated Alumi Shield™ and Steel Shield™ warranties are available on areas >than 5m from the liquid.

■ Where indicated Alumi Shield™ and Steel Shield™ warranties are available on areas >than 2m from the liquid (ie outside the splash zone).

All Dulux powder products are NOT suitable in strongly acidic environments so PH must be >5.

Alumi Shield™ and Steel Shield™ warranties are not available if the powder coating is immersed in any liquid.

## Care and Maintenance

To ensure the life of your asset is maximised and to comply with Dulux warranty requirements, a simple and regular maintenance program should be implemented.

For more information refer to the Dulux Care and Maintenance brochure available at [duluxpowders.com.au/tech-advice](http://duluxpowders.com.au/tech-advice) or call 13 24 99

# Product Summary

## Product Features

Product Features			
Warranties	Alumi Shield™ and Steel Shield™ available - refer to Warranty Benefits		
Technology	Durable polyester thermosetting powder  Selected Duralloy colours are also available with RapidCure Technology enabling reductions in energy consumption during curing and or, increased process line speeds. For more information on RapidCure Technology call 13 24 99 or visit <a href="http://duluxpowders.com.au/rapidcure-technology">duluxpowders.com.au/rapidcure-technology</a>		
Look	Solid		
Finish	Matt, Satin and Gloss		
Colour range	Available in a range of over 120 core colours View the range in the Dulux World of Colour® Powder Coat Series Colour Selector, on Aluminium Swatches, or online. Cards and swatches can be ordered from <a href="http://duluxpowders.com.au">duluxpowders.com.au</a> If you cannot find the colour you require Dulux can offer a Custom Colour Service. Call 13 24 99 or visit <a href="http://duluxpowders.com.au">duluxpowders.com.au</a>		
Standards met	Formulated to meet: AS 3715, AAMA 2603		
Environmental suitability	<table border="0"> <tr> <td style="vertical-align: top;"> <b>Exterior projects (BCA Class 1 and 10)</b> <ul style="list-style-type: none"> <li>• Residential buildings less than 4 Levels</li> <li>• Non-Habitable</li> </ul> </td> <td style="vertical-align: top;"> <b>Interior projects (All BCA Classes)</b> <ul style="list-style-type: none"> <li>• All commercial building</li> <li>• All residential buildings</li> <li>• Non-Habitable</li> </ul> </td> </tr> </table> <p>Refer to project suitability tables in this document for more info</p>	<b>Exterior projects (BCA Class 1 and 10)</b> <ul style="list-style-type: none"> <li>• Residential buildings less than 4 Levels</li> <li>• Non-Habitable</li> </ul>	<b>Interior projects (All BCA Classes)</b> <ul style="list-style-type: none"> <li>• All commercial building</li> <li>• All residential buildings</li> <li>• Non-Habitable</li> </ul>
<b>Exterior projects (BCA Class 1 and 10)</b> <ul style="list-style-type: none"> <li>• Residential buildings less than 4 Levels</li> <li>• Non-Habitable</li> </ul>	<b>Interior projects (All BCA Classes)</b> <ul style="list-style-type: none"> <li>• All commercial building</li> <li>• All residential buildings</li> <li>• Non-Habitable</li> </ul>		

## Securing your Warranty

### Request a Specification

Our dedicated and knowledgeable specification consultants can help simplify the specification process, saving you time and money by ensuring you achieve the best coating specification for the job. They can provide:

- Documented project specific specifications.
- Written confirmation of your project's eligibility for an Alumi Shield™ or Steel Shield™ Warranty.
- Design, coating system and colour advice.

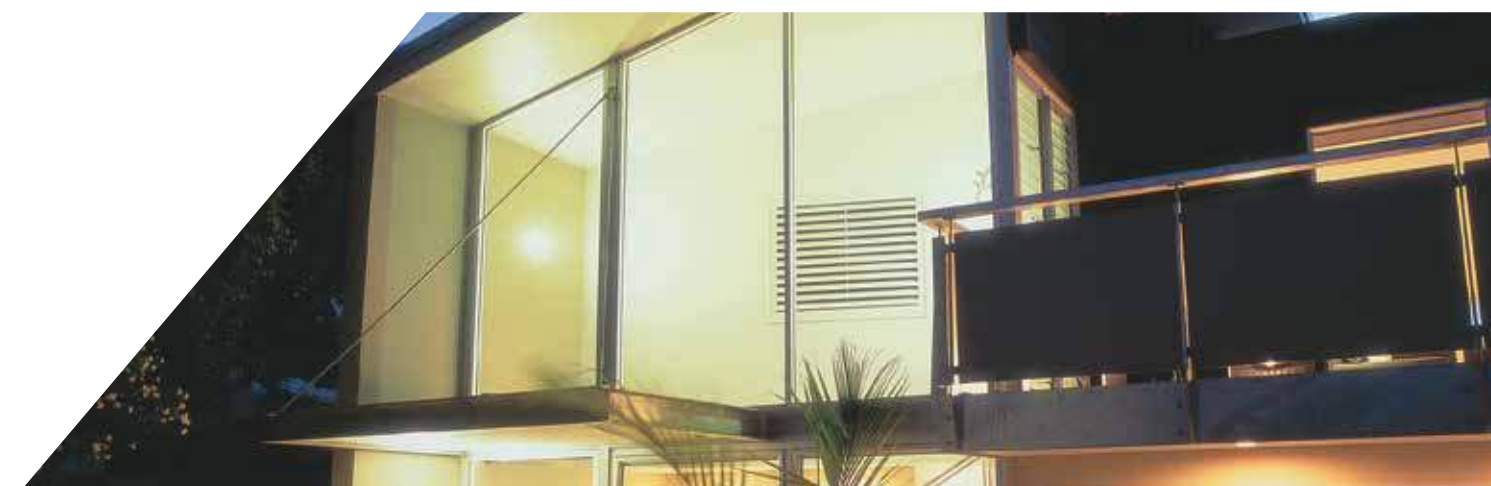
Call 13 24 99 or visit [duluxpowders.com.au](http://duluxpowders.com.au)

### Dulux Accredited Powder Coaters

Only Dulux Accredited Powder Coaters are able to issue our Dulux Alumi Shield™ and Steel Shield™ warranties after demonstrating their capability to meet stringent quality conditions and international standards. Warranties are only valid when applied by a Dulux Accredited Powder Coater to the warranty specification on recommended project types and conditions.



For information visit [duluxpowders.com.au/accredited](http://duluxpowders.com.au/accredited)



## Advice Line

Our dedicated consultants can help simplify the specification process, saving you time and money by providing the right coating advice for your project.

Call 13 24 99

or visit [www.duluxpowders.com.au](http://www.duluxpowders.com.au)

## Offices

### Australia

Dulux Powder & Industrial Coatings

1-15 Pound Road West

Dandenong South VIC 3175

☎ (61) 3 8787 4500

### New Zealand

Dulux Powder & Industrial Coatings

31B Hillside Road

Glenfield, Auckland, New Zealand

☎ (64) 9 441 8244

### Singapore

DGL International Powder & Industrial Coatings

BLK 100 Pasir Panjang Road

#02-10, Singapore 118518

☎ (65) 68381010

### China

DGL International Powder & Industrial Coatings

No.11 Changtang Road, Yantian District

Fenggang, Dongguan, Guandong, China, PC 523701

☎ (65) 68381010